



IMPORTANT NOTICE

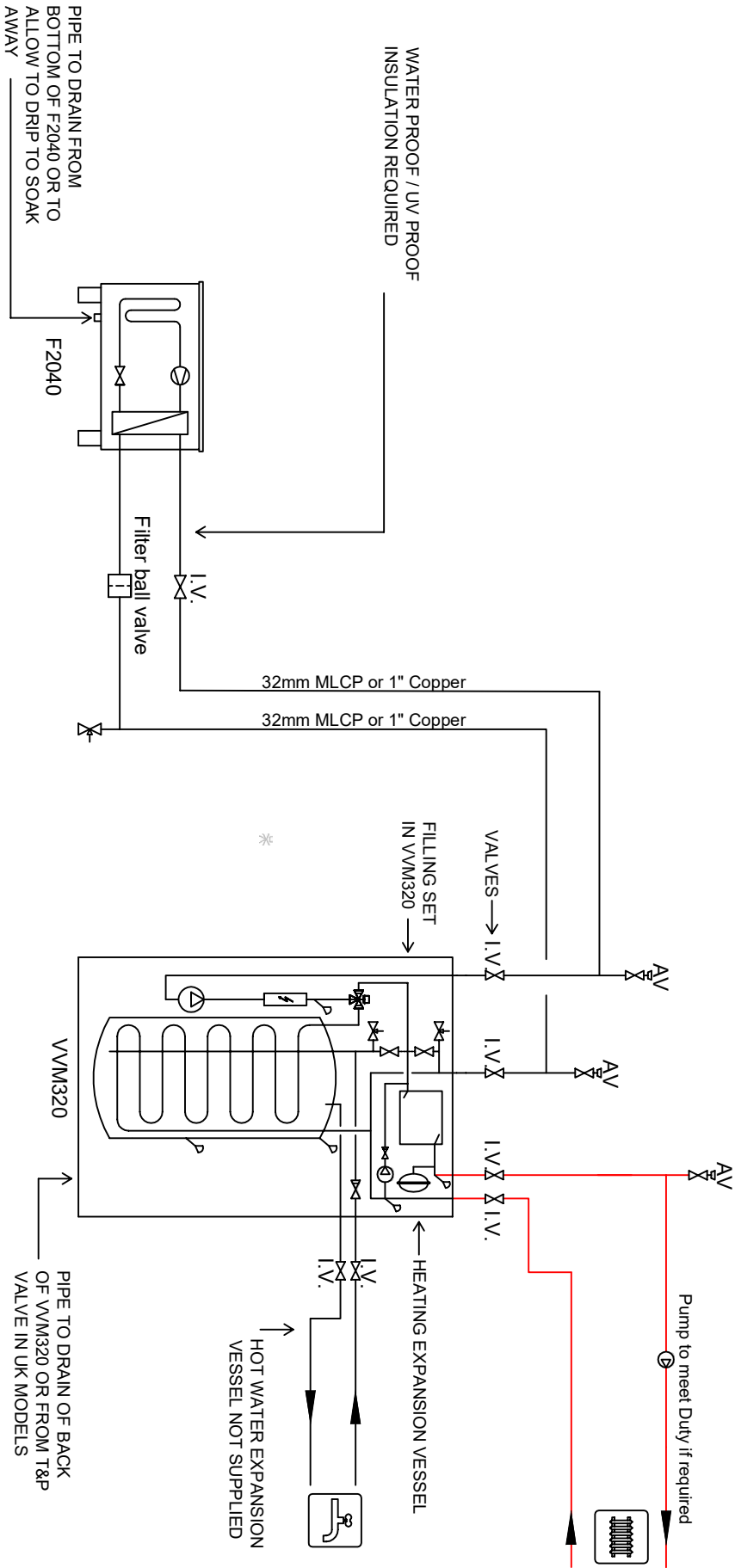
The Docking instructions for this NIBE heatpump are enclosed.

There are several options attached; however if the option you intend to use is not covered here - please phone Unipipe 01-2864888 for assistance.

There can be no deviation from these instructions; all parts must be used as they are functional not optional and may result in the warranty being void.

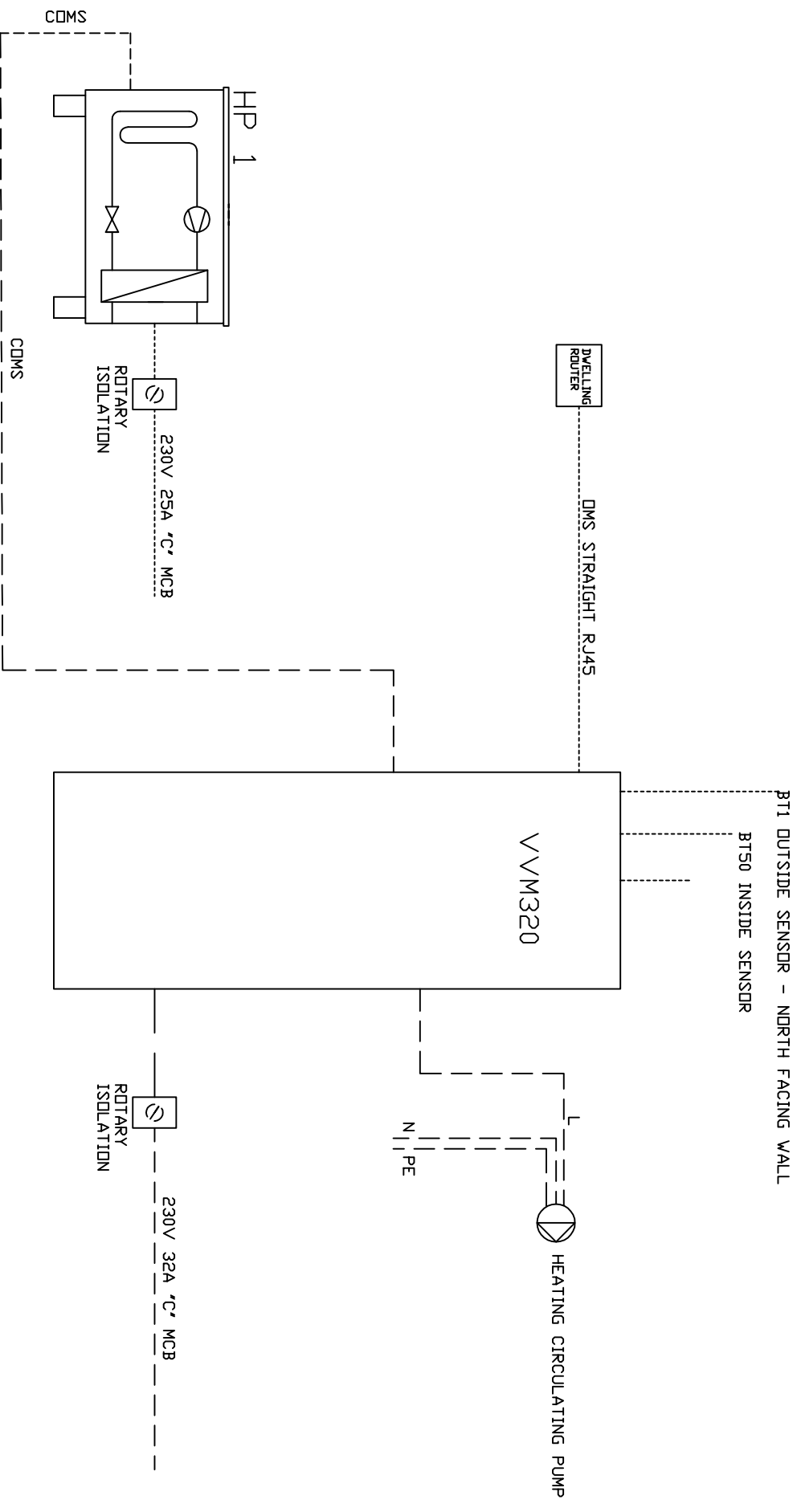
Thank you for your co-operation!

NIBE F2040 PLUMBED WITH VVM320 1 CLIMATE SYSTEM PLUMBERS DIAGRAM



NOTE: THIS IS A GERNEERIC DIAGRAM, PLEASE SEE INSTALLER MANUAL FOR
PIPE TERMINATIONS AND FURTHER INFORMATION

NIBE F2040 AND VVM320 FIRST FIX ELECTRICAL

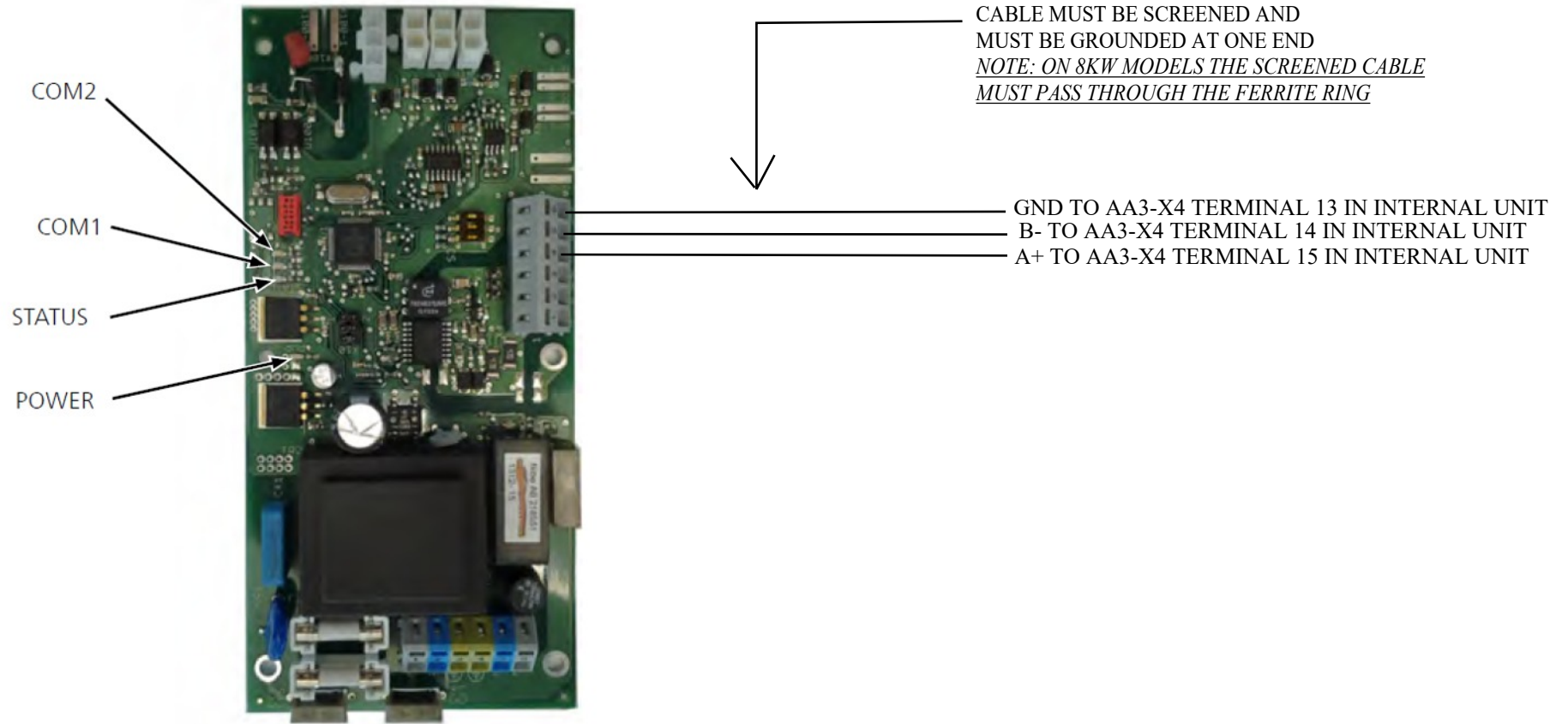


NOTE ALL SENSOR CABLES SCREENED

NOTE ALL COMS CABLES SCREENED

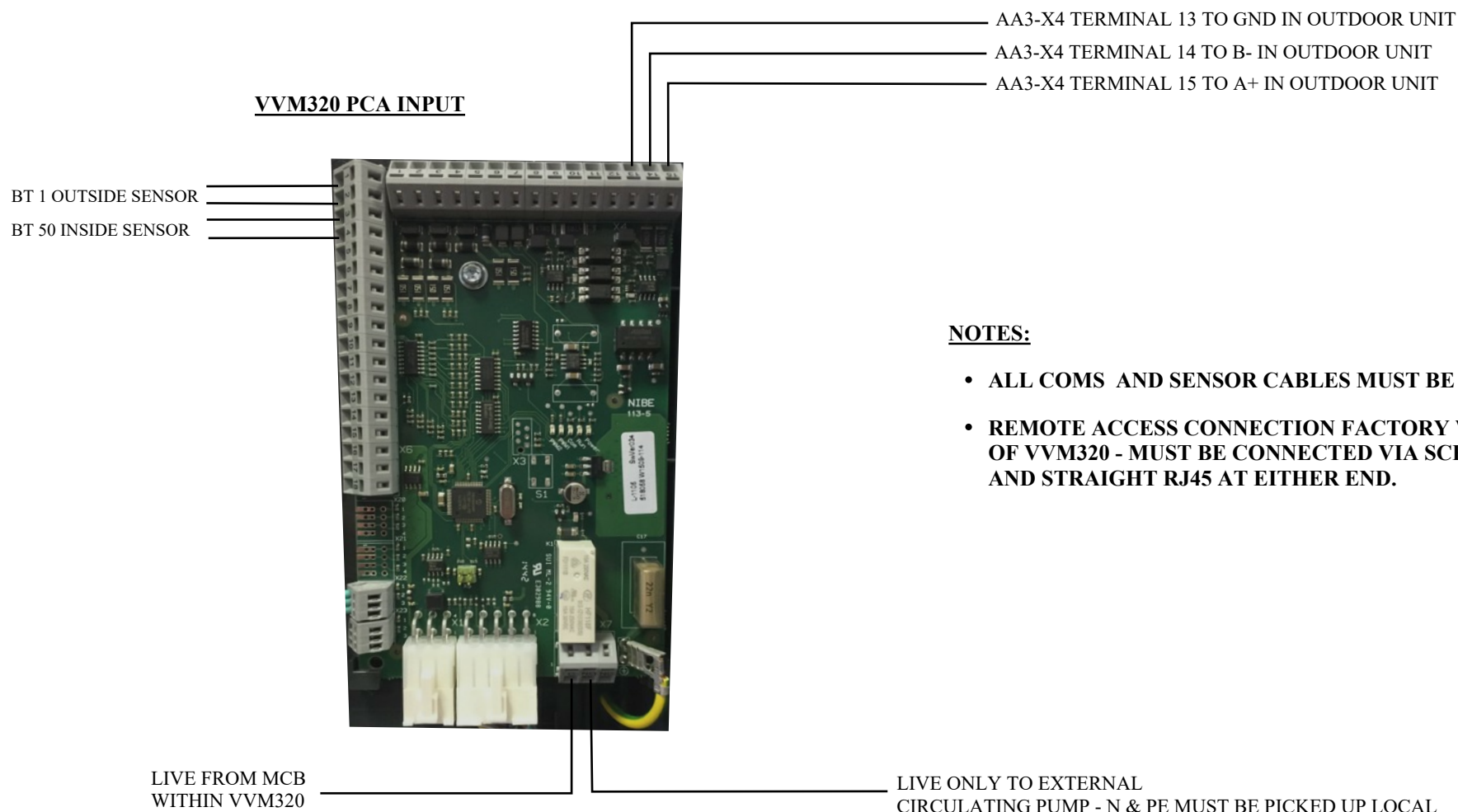
NIBE F2040 ELECTRICAL

Communication board (AA23)



- MAIN POWER CABLE IS PRE WIRED FROM FACTORY AND READY FOR TERMINATION TO YOUR **ROTARY ISOLATION SWITCH**
- 6 OR 10SQ CABLE REQUIRED BACK TO MCB (DEPENDENT ON DISTANCE)
- 25A “C” RATED

NIBE VVM320 ELECTRICAL



NOTES:

- ALL COMS AND SENSOR CABLES MUST BE SCREENED.
- REMOTE ACCESS CONNECTION FACTORY WIRED AT BACK OF VVM320 - MUST BE CONNECTED VIA SCREENED CABLE AND STRAIGHT RJ45 AT EITHER END.

- MAIN POWER CABLE IS PRE WIRED FROM FACTORY AND READY FOR TERMINATION TO YOUR **ROTARY ISOLATION SWITCH**
- 6 OR 10SQ CABLE REQUIRED BACK TO MCB (DEPENDENT ON DISTANCE)
- 32A "C" RATED